



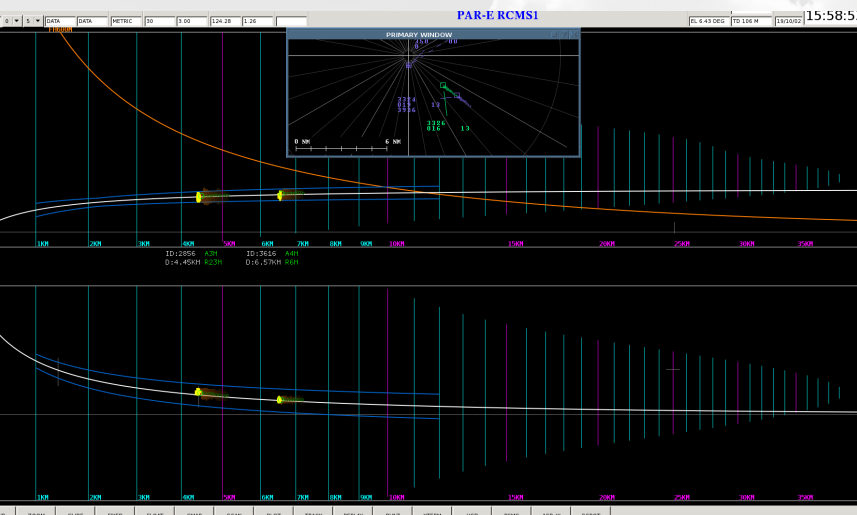
- **Electronic Scanning**
- **Meteo Channel**
- **Transportable Version**

ELDIS
RADAR
SYSTEMS

PAR-E PRECISION APPROACH RADAR

The PAR-E precision approach radar provides important support for the approach and landing control of various aircraft, including the emergency landing due to avionics failure. The radar utilizes an active electronic scanning antennas (AESA) both in the azimuth and the elevation which allows operation without mechanical movement of the antennas. The radar meets relevant ICAO standards and follows the NATO Vision document, according to which the PAR technology will be used at least until 2040.

The PAR-E Precision Approach Radar is designed for target detection such as aircrafts, ground objects and meteorological formations. The detected information is displayed on workplace screens and radar information is transferred to remote ATC workplaces. The radar is particularly important in situations when the pilot has limited sight (because of fog, rain, etc.) and in emergency landing due to avionics failure. In this situation, the radar has to provide the approach controller with maximum quality radar display complemented by computer evaluation of speed, deviations from glide path/course line, the distance from the previously approaching aircraft, etc.



CONFIGURATION

The PAR-E Radar design is fully modular and fully duplicated radar solution, including the system of communication with a remote site. The radar construction is fully solid state, including the transmitting circuits. Both azimuth and elevation antennas involve digital T/R modules ensuring their high reliability.

The PAR-E Radar system involves the BITE diagnostics to enable fast and accurate identification of a faulty block of the radar system.

MOBILITY

The transportable version of PAR-E Radar can be transported by standard vehicles for ISO ferry containers.

MAIN PARTS

- › Antenna system (AESA)
- › Radar Equipment cabin
- › Power supply unit – Diesel generator, UPS unit
- › Fire-fighting system
- › Security electronic system

RADAR DISPLAY MONITOR

- › Analog display - RAW (AD) and selective (MTD) video
- › Display of digital data of PLOTS and TRACKS
- › Local and remote monitoring and control system



BASIC PARAMETERS

- › PAR-E is type of X-Band precision approach radar
- › PAR-E has a range of up to 40 km
- › The radar excels in in low maintenance requirements
- › AESA Electronic Scanning
- › Possibility of transport by container carrier